

Step1, Using Search tool to find local lan YCC365 Cameras, you need to set it up it already,

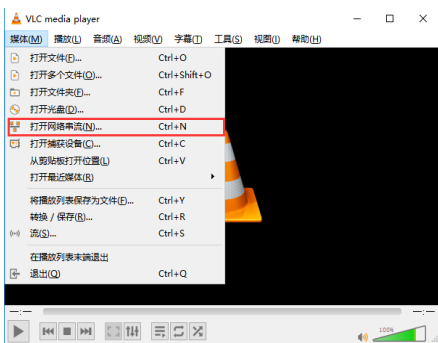
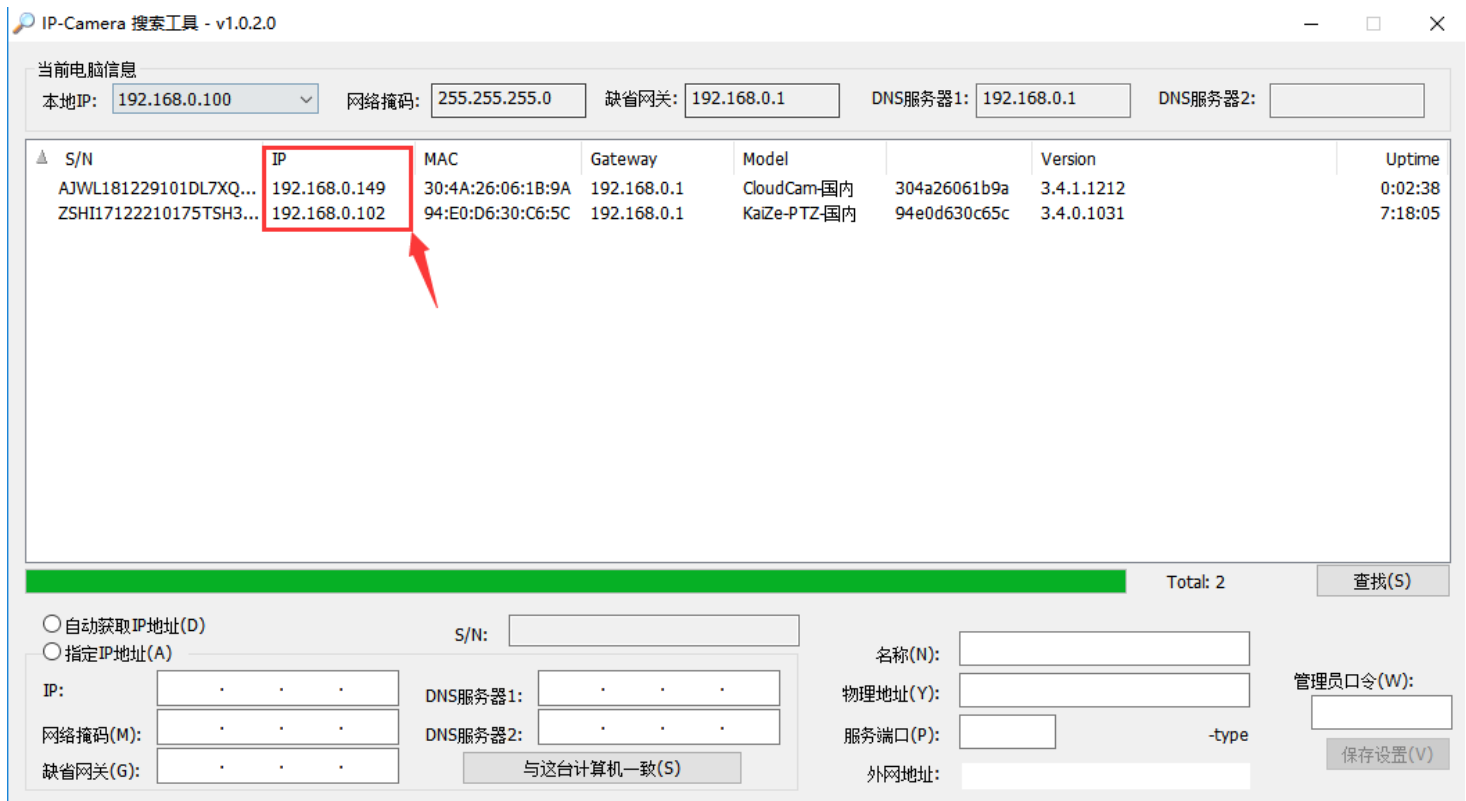


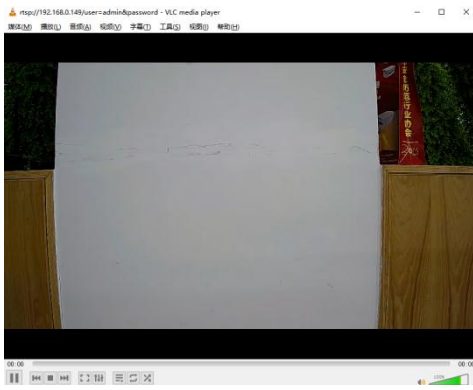
图 1

Step#2: Input Rtsp://IP/user=admin&password

If you are using other player, type login name as admin, password is empty



Step#3: Wait a couple minutes then you can see the video stream



Attention please,。

1. Camera and PC must under same lan and wired connected with cable.
2. You can configure IP address with a fixed IP.
3. Open DHCP function in the routers.